



## Membership Benefits

### Members may...

- Apply for a pollinator garden.
- Attend interesting workshops and presentations.
- Accompany fun, family-friendly organized local excursions.
- Volunteer to help keep our programs going strong.

### Community Outreach

- \* **Subscribe** to our free newsletter - it's buzzing with useful garden information.
- \* **Find us** on Facebook, Twitter and YouTube and stay up to date on our workshops and events.
- \* **Come** to our annual native plant sale.



## Beauty and Biodiversity

*Even with frequent maintenance, lawn grass struggles in typical urban boulevard growing conditions. Replace your grass with colourful, low-maintenance native wildflowers. Good for pollinators and people too!*



### About us...

*Our not-for-profit organization helps urban native pollinators - bees, butterflies and hummingbirds - thrive and adapt to the challenges of climate change.*



## Blooming Boulevards

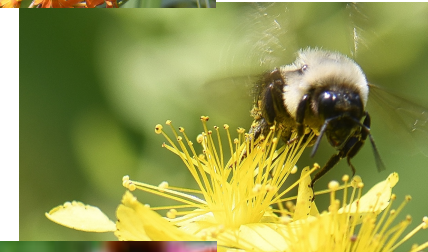
*Connecting neighbourhoods to nature.*

### What we do...



**Increase habitat for butterflies, bees and other insects and birds.**

**Grow native plants, design pollinator gardens.**



**Beautify Mississauga residential boulevards.**

### You can help...

Find out how at  
[www.bloomingboulevards.org](http://www.bloomingboulevards.org)  
[info@bloomingboulevards.org](mailto:info@bloomingboulevards.org)

905-271-1998

1295 Mineola Gardens, Mississauga, ON L5G3Y5

## Why Native Plants?

*We grow plants from locally collected seeds of native wildflowers and grasses. They provide much-needed food and habitat throughout the year for our more than 400 species of native bees, plus other insects and pollinators like butterflies, beetles and hummingbirds.*

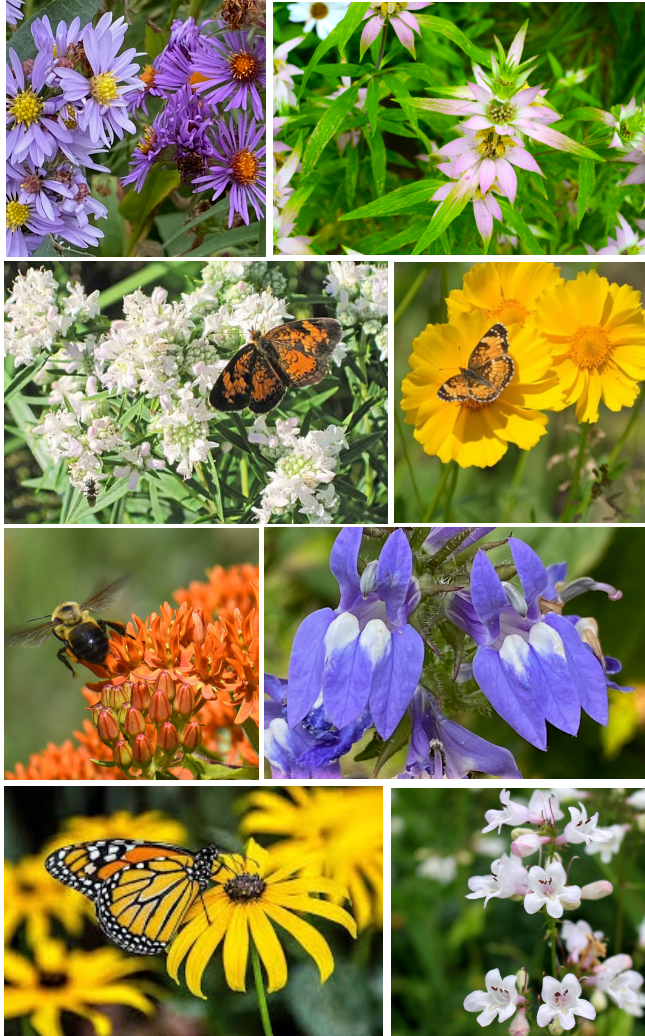
- \* Our native garden plants are low maintenance, adapted to tolerate drought, salt and pollution. They reduce runoff and help conserve water.
- \* All are deep-rooted perennials, tough and durable. They spend their first season growing deep roots. Most begin to bloom in their second year.
- \* Blooming Boulevards provides eligible members with a garden design and up to 50 FREE plants. Expert assistance is available.

### Did you know?

Clusters of residential boulevard gardens serve as a habitat corridor for native bees and butterflies.

**These beautiful easy-care native plants thrive on boulevards:**

- Perennial, under 1 m high, drought & salt resistant
- Tough, pest and disease resistant
- Pollen- and nectar-rich for bees, butterflies and hummingbirds.



**Some of the plants we use:**

Top Row: New England aster, dotted mint

Row 2: Virginia mountain mint, lanceleaf coreopsis

Row 3: Butterfly weed, great blue lobelia

Bottom Row: Black-eyed Susan, foxglove beardtongue

Photos: P. Poldre, J. McRight



## Membership Form

**Single/Family Membership: \$15/yr**

- Mail form and cheque to:  
Blooming Boulevards  
1295 Mineola Gardens, Mississauga,  
ON L5G 3Y5
- Or sign up online and pay via PayPal:  
[www.bloomingboulevards.org](http://www.bloomingboulevards.org)

Name:

Address:

Phone:

Email:

- I live in Mississauga.
- I'm interested in growing a boulevard pollinator garden and would like to learn more.
- I'd like to volunteer. I can share these skills:

Join us!  
Scan to learn more

