



These are some of the insects that depend on our plants to reproduce (larval hosts) and as well others that benefit from them.



# Swamp Milkweed –

Larval host plant for  
Endangered Monarch  
Butterfly



**Yellow milkweed aphids**



**Milkweed tussock**



Baz Conlin



**Stalk Borer Moths**

(c) Alan Macnaughton – [some rights reserved](#) (CC BY-NC)

**Milkweed leaf beetle**



**Delicate Cynia Moth**



© naturalpriest, [some rights reserved](#) (CC-BY-NC)

**Milkweed Longhorn Beetle**



# Swamp Milkweed



Jody Frey

**Striped Garden Caterpillar**



David George Dietlein



**Large Milkweed bug**



**Queen Butterfly**

**Blackened, Milkweed and Milkweed Leaf Beetles**



**Milkweed Tussock**



Baz Conlin

# Butterfly milkweed

**Delicate Cynia Moth**



Photo by: Buddy Sergesketter



**Grey Hairstreak**

**Queen Butterfly**



**Stalk Borer, Striped Garden Caterpillar and cynia Moths**



**Endangered Monarch Butterflies**





Cheryl Geddes

# Prairie Smoke

*early spring  
food choice for  
queen bumble  
bees*



Cheryl Geddes

Andrena (Mining Bee)



# Golden Alexander

Common Eupithecia moths



© Graham Sorenson, some rights reserved (CC-BY-NC-SA)

- Black swallowtail butterfly

- Pollen specialist bee: *Andrena Ziziae*
- Larval host:
  - Black swallow tail butterfly
  - Rigid Sunflower Borer
  - Common Eupithecia moths

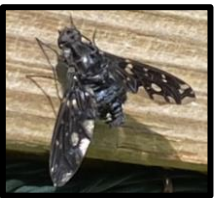
Rigid Sunflower Borer



© Jewelwing66



- Great nectar/pollen source for:
  - bees
  - wasps/flies
  - beetles
  - butterflies





# Bowman's Root

- Pollen source for bees, flies and butterflies





# Blue-eyed Grass

Pollen supports hover flies  
and bees





Larval host:  
Baltimore  
checkerspot  
butterfly



Specialist pollen wasp:  
*Pseudomasaris occidentalis*

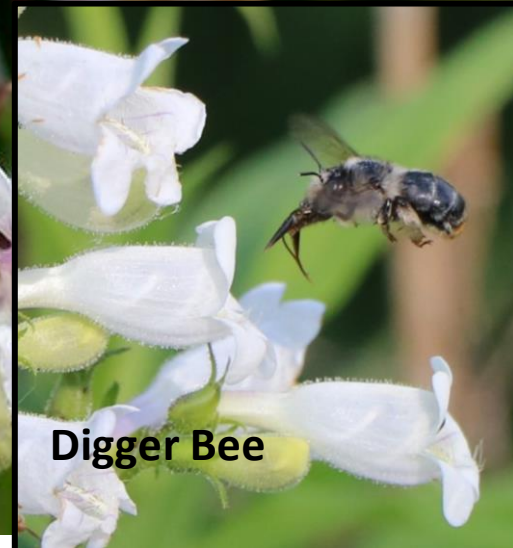


# Foxglove Beardtongue

Pollen Specialist Beardtongue  
Scraper bee (*Osmia Distincta*)



Verbena bud moth



**Pollen Specialist:**  
**Beardtounge Scraper bee**  
*(Osmia Distincta)*



© tomwood734, some rights reserved (CC-BY-NC)

# Hairy Beardtongue

**Specialist pollen wasp:**  
*Pseudomasaris occidentalis*



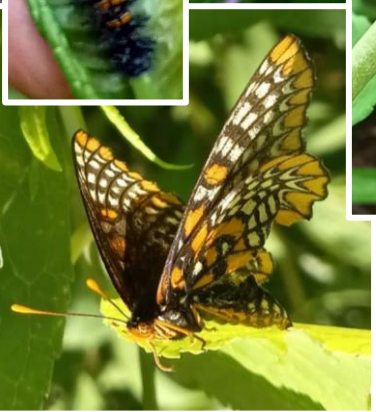
© Bob O'Kennon, some rights reserved (CC-BY-NC)

**Saunders Sallow**



© Karen Yukich, some rights reserved (CC-BY-NC)

**Larval host: Baltimore checkerspot butterfly**



**Verbena bud moth**



# Lead Plant

- Pollen/nectar for bees and butterflies
- Supports:
  - 9 species of moths
  - 10 species of beetles
  - 15 species of grasshoppers



# White Yarrow



Yarrow Plume Moth and 5 other species of moths



© Carter Dorscht, some rights reserved (CC-BY-NC)



Wavy-lined emerald moth



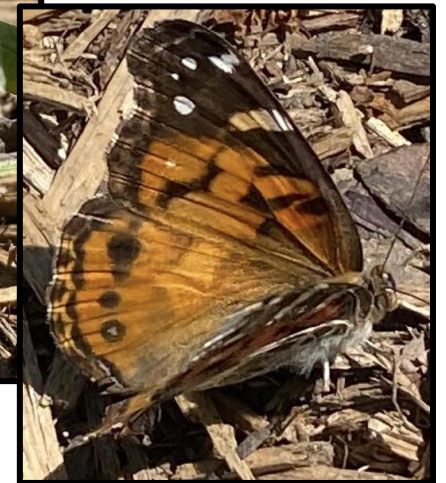
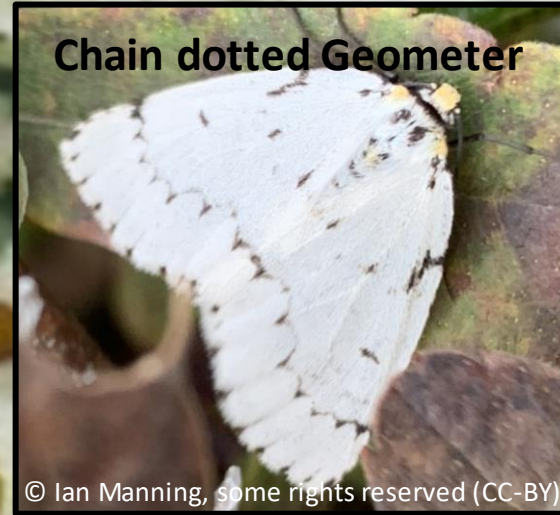
Painted Lady Butterfly

Michelle Muncaster



Hover fly

# Pearly Everlasting



American Lady



+ other moths

# Greyheaded Coneflower



Wavy-lined emerald



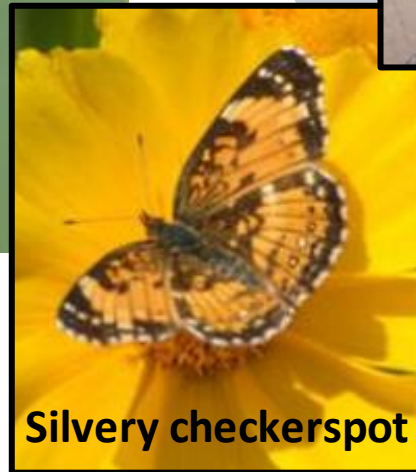
© Carter Dorscht, some rights reserved (CC-BY-NC)

Common Eupithecia



© Graham Sorenson,  
some rights reserved (CC-BY-NC-SA)

Silvery checkerspot



Carpenter Bee



# Blue Lobelia

- Nectar/pollen source for bees, butterflies and hummingbirds
- Larval host for 3 species of moths





Silvery & Gorgone Checkerspots



Host for 17 Pollen specialist bees!



Wavy-lined emerald



Bembix wasp



American Lady



Claude Pelletier-Fader

Blackberry Looper

+8 brown moths

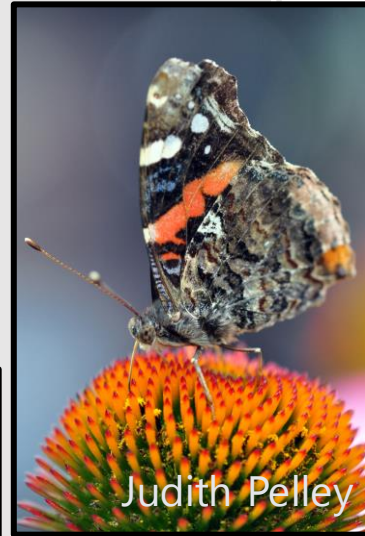
# Black-eyed Susan



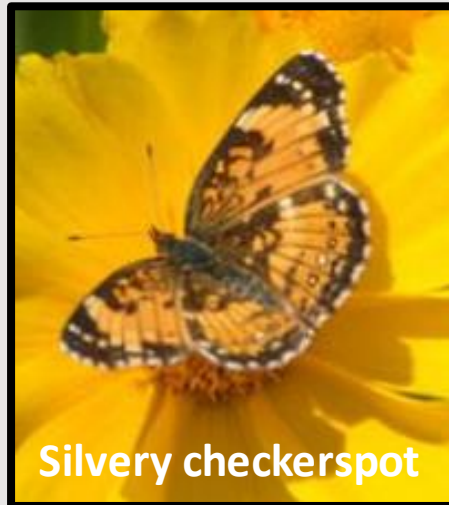
# Pale Purple Coneflower



Judith Pelley



Judith Pelley



Silvery checkerspot



Wavy-lined emerald

© Carter Dorscht, some rights reserved (CC-BY-NC)



Pete Witnesses Nature



Pete Witnesses Nature



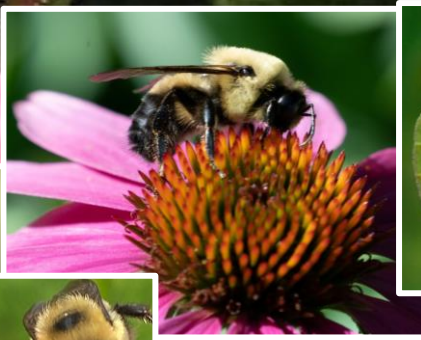
© Joshua Klostermann,



Common Eupithecia

© Graham Sorenson, some rights reserved (CC-BY-NC-SA)

- Specialist bee *Andrena helianthiformis*



Judith Pelley

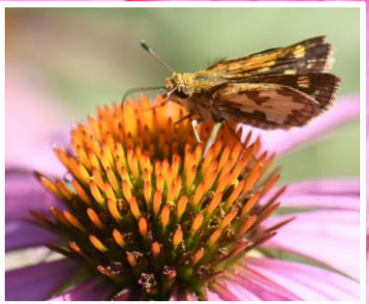
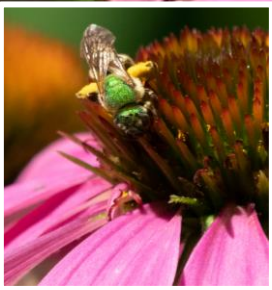


Mourning cloak



Wavy-lined emerald

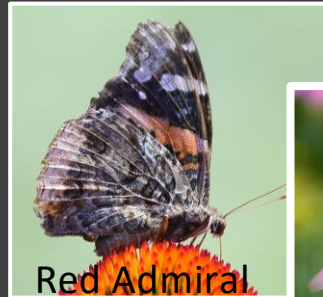
© Carter Dorscht, some rights reserved (CC-BY-NC)



Silvery checkerspot



Black Admiral



Red Admiral



Judith Pelley



Hickory Hairstreak



© Joshua Klostermann,

Specialist bee *Andrena helianthiformis*

# Purple Coneflower



# Anise Hyssop

---

Nectar and pollen source  
for bees and butterflies



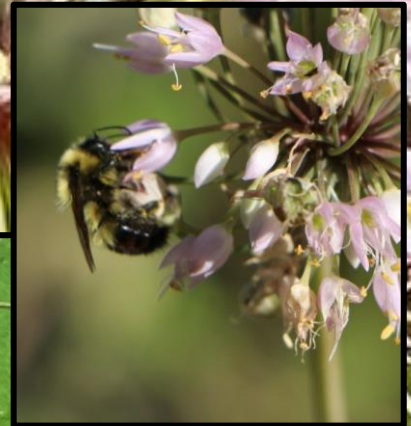


© Kathryn Zerbe, some rights reserved (CC-BY-NC)



Nutmeg Moth

© Alan Macnaughton, some rights reserved (CC-BY-NC)



Zebra Caterpillar Moth

© Brent Guinn, some rights reserved (CC-BY-NC)



Reaper Dart

© Ray Snook, some rights reserved (CC-BY-NC)

Larval host to:  
Nutmeg, Reaper  
Dart  
Tessellate and Zebra  
Caterpillar Moths

# Nodding Onions



# Canadian Columbine



Columbine Borer



© allenwoodliffe, some rights reserved (CC-BY-NC)





Judith Pelley



© Brenda, some rights reserved (CC-BY-NC)

Virginian Tiger Moth



© mimyp, some rights reserved (CC-BY-NC)



# Blue Vervain

Larval Hosts for 10 moth species



Spotted Phosphila

© John Trent, some rights reserved (CC-BY-NC-ND)



(c) Cecil Smith – some rights reserved (CC BY)

Sparganothis Fruitworm



Common Looper

© mulfield, some rights reserved (CC-BY-NC)



# Hoary Vervain



Virginian Tiger Moth

© mimyp, some rights reserved (CC BY-NC)



Spotted Phosphila

© John Trent, some rights reserved (CC-BY-NC-ND)

Sparganothis Fruitworm



(c) Cecil Smith – some rights reserved (CC BY)



Common Looper

© mulfield, some rights reserved (CC-BY-NC)

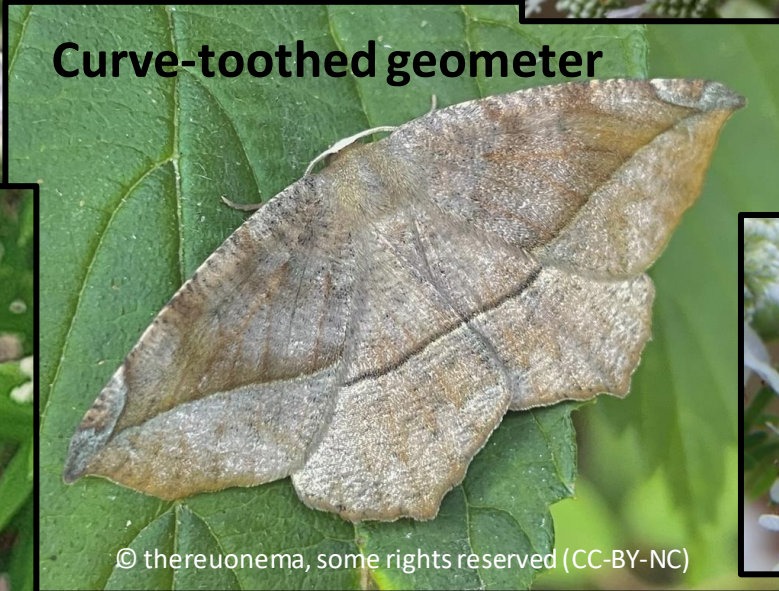


Judith Pelley

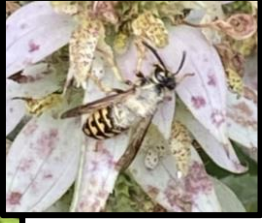
# Virginia Mountain Mint



Popular with bees, butterflies and beetles







Orange Mint Moth

© Rick Gray, some rights reserved (CC-BY-NC)

Specialist bee:  
*Dufourea monardae*



© K Swanson



Judith Pelley

# Dotted Mint



Hermit Sphinx Moth

© ColinDJones, some rights reserved (CC-BY-NC)



Raspberry Mint Moth

© Riley Jauniaux, some rights reserved (CC-BY-NC)

OrangeMint Moth



© Brittany, some rights reserved (CC-BY-NC)

Northern Brooker -Dash

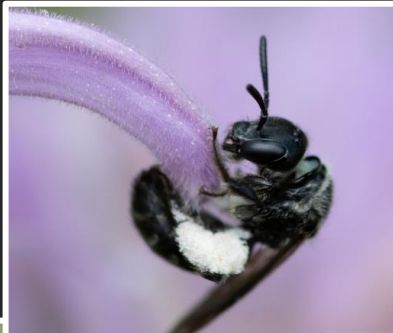


Blueberry Leaf-tier



© gis1, some rights reserved (CC-BY-NC)

Specialist bee:  
*Dufourea monoardae*



© K Swanson

# Wild Bergamot

*Monarda fistulosa*



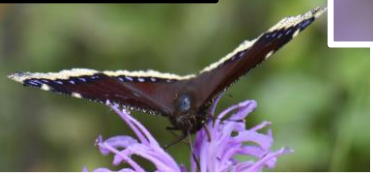
© K Swanson



© K Swanson



© K Swanson



Hermit Sphinx moth



© ColinDJones, some rights reserved (CC-BY-NC)



Raspberry Mint Moth



© Riley Jauniaux, some rights reserved (CC-BY-NC)



Silver Spotted Skipper

Bordered Sallow



© Татьяна Дензанова, some rights reserved (CC-BY-NC)

Hoary Edge



© Kathryn Zerbe, some rights reserved (CC-BY-NC)

Attracts 6 species of Long Tongued bees



# Showy Tick Trefoil



**Long Tailed Skipper**  
© MLFisher, some rights reserved (CC-BY-NC)



Tick-trefoil  
Caloptilia  
moth  
© Mark Eanes, some rights reserved (CC-BY)



**Silver Spotted Skipper**



**Grey Hairstreak**



**Northern Cloudywing**  
© pinemartyn, some rights reserved (CC-BY-NC)



**Eastern tailed-blue**

Sparganothis Fruitworm



(c) Cecil Smith – some rights reserved (CC-BY)

Arge Moth



© Leah Nelson, some rights reserved (CC-BY-NC)

Pearly Wood-nymph



© mistycal, some rights reserved (CC-BY-NC)

Evening Primrose Sweat Bee (*Lasioglossum oenotherae*)



© marcjohnson, some rights reserved (CC-BY-NC)

• Pollen Specialist Bees

Long horned bee (*Svastra compta*)



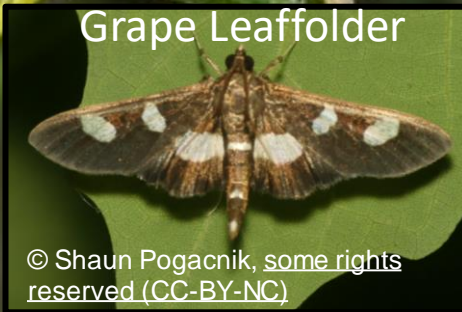
© Jay Pruett, some rights reserved (CC-BY-NC)

White Lined Sphinx



© shelleyhamilton, some rights reserved (CC-BY-NC)

Grape Leafroller



© Shaun Pogacnik, some rights reserved (CC-BY-NC)

Nessus Sphinx



© Bo Zaremba, some rights reserved (CC-BY-NC)

Gallium Sphinx

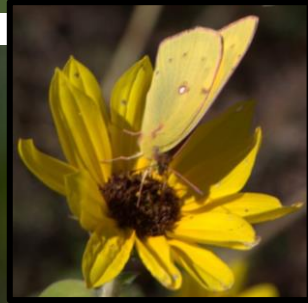
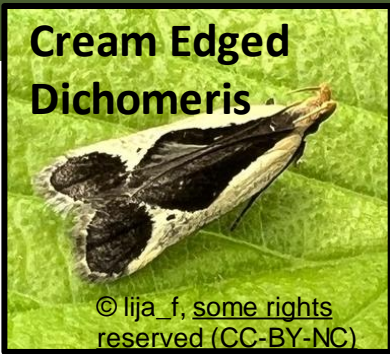


© Stephen Luk, some rights reserved (CC-BY-NC)

# Evening Primrose

+ 4 types of Mompha/double-banded carpet moths

Host for 20  
species of  
pollen  
specialist  
bees!

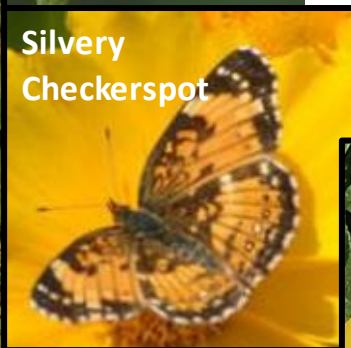
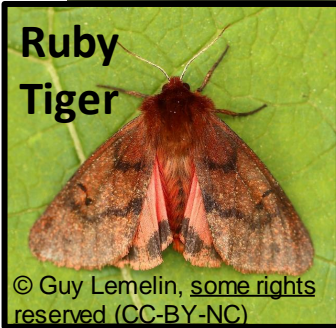


**Painted Lady**



Michelle Muncaster

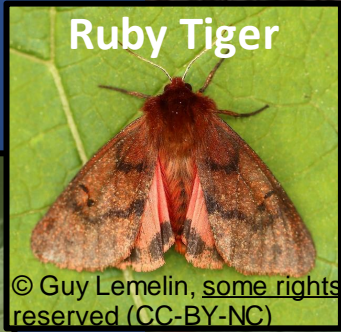
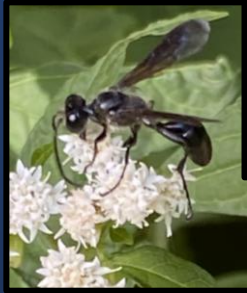
# Woodland Sunflower



**Silvery  
Checkerspot**



+many more moth species



# White Snakeroot



+ 11 other moths



# Spotted Joe Pye Weed



**Yellow-Collared Scape Moth**



**Wavy lined Emerald Moth**





WavyLined Emerald

© Carter Dorscht, some rights reserved (CC-BY-NC)



Marsh fly



Cloudless Sulpher



Blackberry Looper

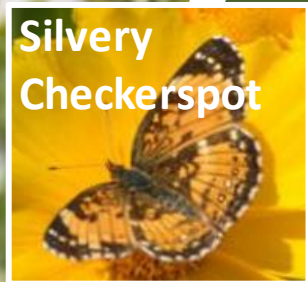


# Asters

Host to 33 Pollen Specialist Bees!!!

+ over 112 species of moths & butterflies

Silvery Checkerspot



Northern Crescent



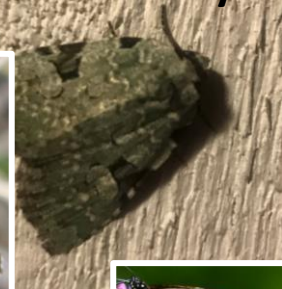
© nanc35, some rights reserved (CC-BY-NC)

Pearl Crescent



© David Gorsline, some rights reserved (CC-BY-NC-SA)

Green Leuconycta



TawnyCrescent



© Steve Ansell, some rights reserved (CC-BY-NC)

Pollen source for migrating monarchs







Grey



Black Arches  
© stevewalturnature, some rights reserved (CC-BY-NC)



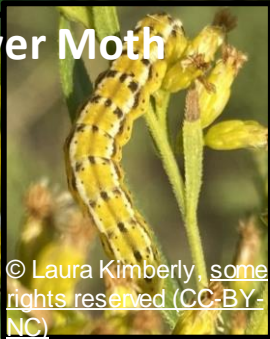
ZigZag



© K Swanson



Goldenrod flower Moth



© Laura Kimberly, some rights reserved (CC-BY-NC)



False crocus geometer

Pete Witnesses Nature



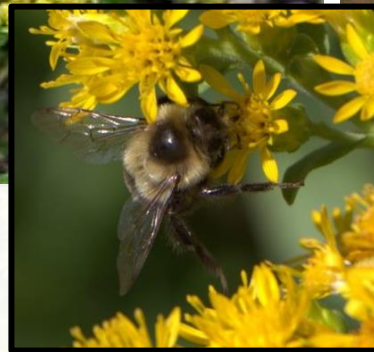
Pete Witnesses Nature



Stiff



© Carter Dorscht, some rights reserved (CC-BY-NC)



Blue stem



Eastern Calligrapher



Host to 42 Pollen Specialist Bees

&

Goldenrods: 115 Caterpillar species

• **Keystone Plant!!!**

• "Natures greatest gift to animal life." D. Tallamy

Peck's Skipper



Common Blue



# Lanceleaf Coreopsis



Pollen specialist bees:

5 species of Long-horned bees  
(*Melissodes* sp)



Wavy lined  
Emerald  
Moth  
Caterpillar



2 species of Leafcutter bees  
(*Megachile* sp)



Blackberry Looper  
caterpillar



Wavy lined Emerald Moth



# Bottlebrush Grass

Larval host for leaf beetle  
(*Chalepus walshii*)

*as well as other beetles, flies  
&  
6 moth species*



Leaf beetle



© Carol, some rights reserved (CC-BY-NC)



Northern pearly eye butterfly

© carshenan, some rights reserved (CC-BY-NC)



# Prairie Junegrass



Likely host for several  
Skippers  
&  
leafhoppers



Dusted Cobweb Skipper



© alimirth, some rights reserved (CC-BY-NC)

Common wood-nymph



© Kyle Horner, some rights reserved (CC-BY-NC-ND)



© K Swanson



# Little Bluestem



+ 5 other moth species

Ottoe Skipper



© christian\_nunes, some rights reserved (CC-BY-NC)



# Sideoats Grama



3 Specialist Leafhoppers